

ICON 6-150

ICON 8-150

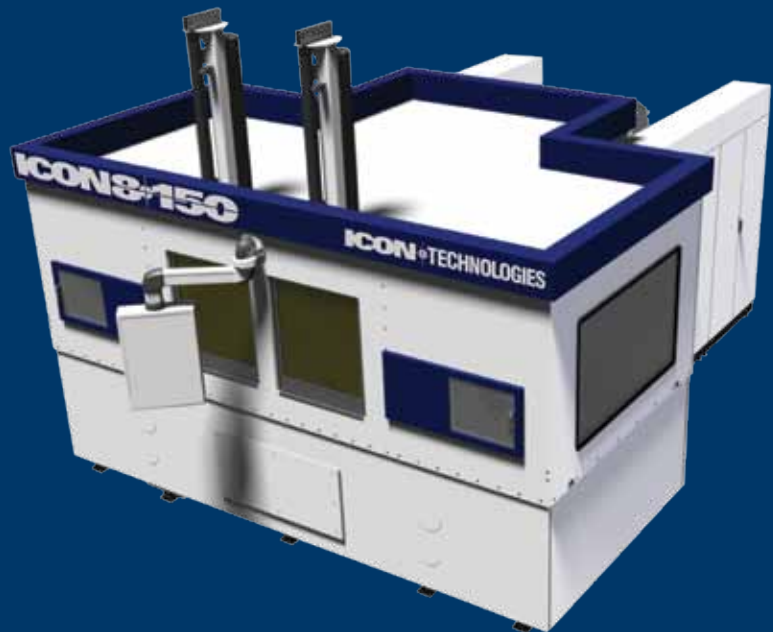
Two New, Unique Productivity Centers

The Ultimate in Productivity and Flexibility

Versatile System For Increased Production

Maximum Output In A Small Footprint

Rapid Tool Changes At All Stations



ICON TECHNOLOGIES
ADVANCED MACHINING SOLUTIONS
A Division of Hydromat Inc

ICON 6-150 Specifications

Pallet Changer 6-150

Direct Drive via Fanuc Torque Motor
Amount of Pallets: 6
Single Index (6 x 60°)
Double Index (3 x 120°)
Table Index Time 3.5 seconds

Index Drives

Amount of Index drives: 4 positions
Index speed: 0.9 seconds for 180°
Rotation: 360.000x0.001°
Maximum Turning Speed: 5,000rpm
Maximum payload per pallet: 30 kg (66 lb)

Controls / Voltages

Control: Fanuc 30i
Drives: Fanuc 30i
Main Voltage: 480V @ 60 Hz

Tool Changer 6-150

Tool head receiver: HSK E40
16 tool positions
Chip to chip in 3.5 - 4.5 seconds
Maximum tool length: 140 mm (5.5 in)
Maximum diameter: 45 mm (1.8 in)
Maximum tool weight: 4 kg (8.8 lb)

Coolant System

30µm high pressure
Up to 80bar through spindle
Self cleaning permanent media
75µm low pressure
Paper or cartridge filter media



ICON 8-150 Specifications

Pallet Changer 8-150

Direct Drive via Fanuc Torque Motor
Amount of Pallets: 8
Single Index (8 x 45°)
Double Index (3 x 90°)
Table Index Time 3.5 seconds

Index Drives

Amount of Index drives: 6 positions
Index speed: 0.9 seconds for 180°
Rotation: 360.000x0.001°
Maximum Turning Speed: 5,000rpm
Maximum payload per pallet: 30 kg (66 lb)

Coolant System

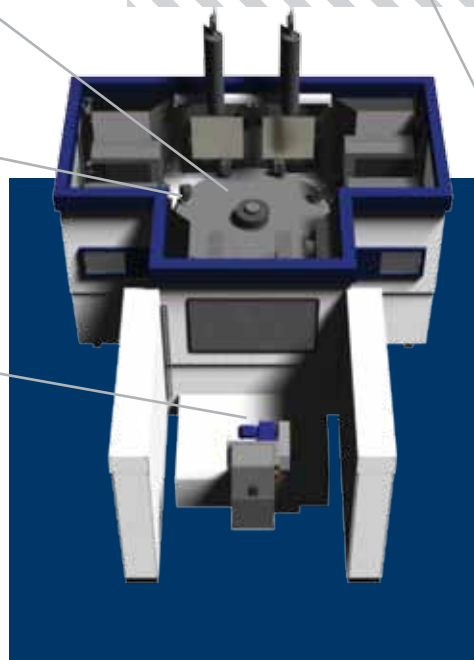
30µm high pressure
Up to 80bar through spindle
Self cleaning permanent media
75µm low pressure
Paper or cartridge filter media

Tool Changer 8-150

Tool head receiver: HSK E40
12 tool positions
Chip to chip in 3 - 4 seconds
Maximum tool length: 140 mm (5.5 in)
Maximum diameter: 45 mm (1.8 in)
Maximum tool weight: 4 kg (8.8 lb)

Controls / Voltages

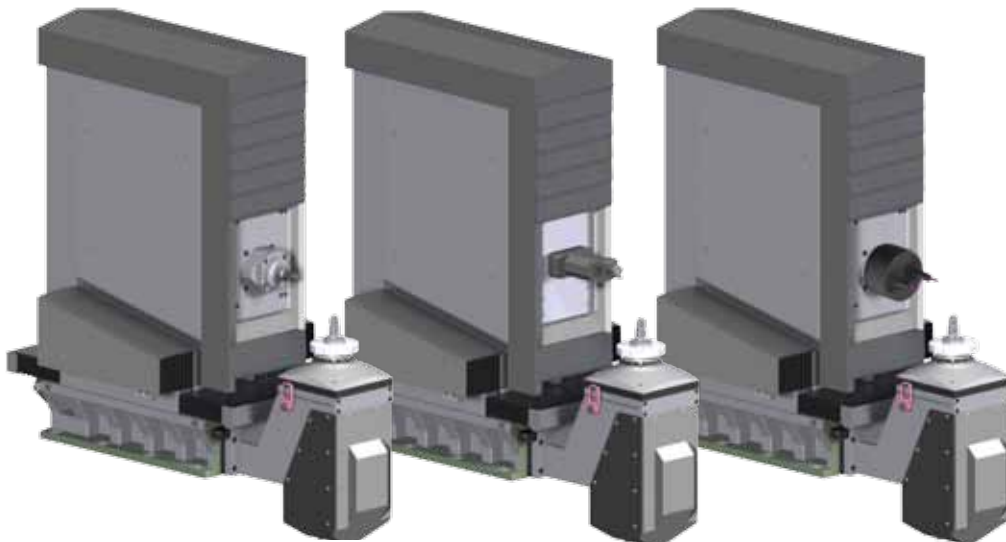
Control: Fanuc 30i
Drives: Fanuc 30i
Main Voltage: 480V @ 60 Hz



MACHINING MODULES



Mill / Turn Machining Module



Standard Machining Module

Stroke:

ICON 6-150: X -120mm Y - 250mm Z - 250mm
ICON 8-190: X -120mm Y - 250mm Z - 250mm

Stal Torque X, Y & Z:

8Nm

Rapid Speed:

50 m/min max. (197 ft / min)

Axis Construction:

Ball Screw

Capability:

Horizontal Drilling
Horizontal Milling
Horizontal Boring

Integrated Spindle Motors:

Water Cooled

Power @ 40%: 36 kW ???

Torque @ 3,500 /12,000 RPM 98 / 29 Nm???

Spindle Motor Interface:

HSK- E40 or E32

Spindle Performance:

Standard Spindle RPM: 42,000 max

Option 1 Spindle RPM: 20,000 max

Option 2 Spindle RPM: 60,000 max

Optional Turning Module

Size of cutting tool holder:

1/4" tool shanks

1/2" boring/Drilling holder

Capability:

Vertical Drilling
Vertical Boring
Vertical/Horizontal Turning

Tooling:

Up to 12 Turning or Drilling tools

Optional Mill/Turn Module

Size of cutting tool holder:

1/4" tool shanks

1/2" boring/Drilling holder

Capability:

Vertical Drilling
Vertical Boring
Vertical/Horizontal Turning

Tooling:

1 Fixed and 12 Turning or Drilling tools

Standard Module

Capto Turning

Special Application